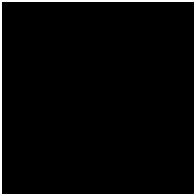
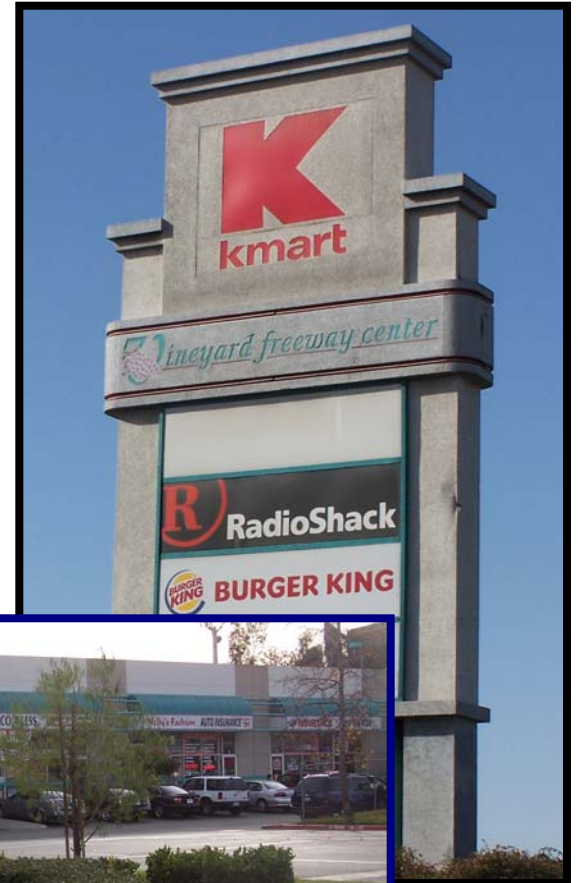


Vineyard Freeway Center

1610-1680 E. 4th St., Ontario, CA



HIGHLIGHTS

- Excellent 10 Freeway Exposure
- Anchored by K-Mart
- Shop and Pads Available for Lease
- Strong Demographics
- Established population

Demographics

Population:

1 mile	35,973
3 miles	172,292
5 miles	403,213

Average Income:

1 mile	\$53,101
3 miles	\$52,739
5 miles	\$62,439



Commercial Real Estate Services, Worldwide.

No warranty, express or implied, is made as to the accuracy of the information contained herein. This information is submitted subject to errors, omissions, change of price, rental or other conditions, withdrawal without notice, and to any special listing conditions imposed by our principals.

For information, please contact your exclusive listing agent

Brandon Beauchemin
Lidia Talavera
 bbeauchemin@naicapital.com
 ltalavera@naicapital.com

3281 East Guasti Rd, Suite 225
 Ontario, California 91761
 tel 909 945 2339
 fax 909 945 2338

Vineyard Freeway Center

1610-1680 E. 4th St., Ontario, CA

Site Plan



ST#	Tenant Name	Sf
1620	Burger King	2,532
1630AB	MZM \$ Plus	2,340
1630CD	City Best Insurance	2,148
1630E	Nelly's Fashion	1,040
1630F	Advance Til Payday	1,040
1630G	Tobacco 4 Less	1,040
1630H	AAA Check Cashing	960
1630J	Radio Shack	1,953
1630K	El Chillitos Mexican Rest	1,040
1630L	Procare Hair N Nails	1,040
1630M	Kind Dental Center	2,130
1630N	Rami Accessories	1,299
1630O	Staffing Agency	490
1640AB	USA Furniture	12,946
1640C	CNC Motorsports	12,936
1650A	Domino's Pizza	1,254
1650C	Laundromat	2,820



Commercial Real Estate Services, Worldwide.

No warranty, express or implied, is made as to the accuracy of the information contained herein. This information is submitted subject to errors, omissions, change of price, rental or other conditions, withdrawal without notice, and to any special listing conditions imposed by our principals.

For information, please contact your exclusive listing agent

Brandon Beauchemin
Lidia Talavera
 bbeauchemin@naicapital.com
 ltalavera@naicapital.com

3281 East Guasti Rd, Suite 225
 Ontario, California 91761
 tel 909 945 2339
 fax 909 945 2338